



STUART ROAD

PRIMARY SCHOOL

growing every day

Supporting Pupils with Medical Conditions Policy 2017

The policy framework describes the essential criteria for how a school can meet the needs of children and young people with long-term conditions. It is in line with DfE statutory guidance on Supporting Pupils with Medical Conditions (2014) for governing bodies of maintained schools and proprietors of academies in England

https://www.gov.uk/government/uploads/system/uploads/attachment_data/file/349435/Statutory_guidance_on_supporting_pupils_at_school_with_medical_conditions.pdf

SUPPORTING PUPILS WITH MEDICAL CONDITIONS POLICY

The named member of school staff responsible for this medical conditions policy and its implementation is:

NAME: Mitch Frame (Headteacher)

Stuart Road is an inclusive school that supports and welcomes pupils with medical conditions.

- This school is welcoming and supportive of pupils with medical conditions. It provides children with medical conditions with the same opportunities and access to activities (both school based and out-of-school) as other pupils.
- This school will listen to the views of pupils and parents/carers.
- Pupils and parents/carers feel confident in the care they receive from this school and the level of that care meets their needs.
- Staff understand the medical conditions of pupils at this school and that they may be serious, adversely affect a child's quality of life and impact on their ability and confidence.
- All staff understand their duty of care to children and young people and know what to do in the event of an emergency.
- This school understands that all children with the same medical condition will not have the same needs, our school will focus on the needs of each individual child.
- The school recognises its duties as detailed in Section 100 of the Children and Families Act 2014. (Other related legislation is referenced in DfE guidance p21). Some children with medical conditions may be considered to be disabled under the definition set out in the Equality Act 2010. Where this is the case, this school complies with their duties under that Act. Some may also have special educational needs (SEN) and may have a statement, or Education, Health and Care (EHC) plan which brings together health and social care needs, as well as their special educational provision. For children with SEN, this policy should be read in conjunction with the
- Special Educational Needs and Disability (SEND) Code of Practice.

The medical conditions policy is supported by a clear communication plan for staff, parent/carers/carers and other key stakeholders to ensure its full implementation.

- Pupils, parents/carers, relevant local healthcare staff, and other external stakeholders are informed of and reminded about the medical conditions policy through clear communication channels.

All staff understand and are trained in what to do in an emergency for children with medical conditions at this school.

- All school staff, including temporary or supply staff, are aware of the medical conditions at this school and understand their duty of care to pupils in an emergency.
- All staff receive training in what to do in an emergency and this is refreshed at least once a year.
- All children with medical conditions that are complex, long-term or where there is a high risk that emergency intervention will be required at this school have an individual healthcare plan (IHCP) which explains what help they need in an emergency. The IHCP will accompany a pupil should they need to attend hospital. Parental permission will be sought and recorded in the IHCP for sharing the IHCP within emergency care settings.
- This school makes sure that all staff providing support to a pupil have received suitable training and ongoing support to ensure that they have confidence to provide the necessary support and that they fulfil the requirements set out in the pupil's IHP. This should be provided by the specialist nurse/school nurse/other suitably qualified healthcare professional and/or parent/carer. The specialist nurse/school nurse/other suitably qualified healthcare professional will confirm their competence and this school keeps an up to date record of all training undertaken and by whom.
- **This school has chosen not to hold an emergency salbutamol inhaler for use by pupils.**

All staff understand and are trained in the school's general emergency procedures.

All staff should be aware of the content of this policy, know what action to take in an emergency and receive updates at least yearly.

If a pupil needs to attend hospital, a member of staff (preferably known to the pupil) will stay with them until a parent/carer arrives, or accompany a child taken to hospital by ambulance.

This school has clear guidance on providing care and support and administering medication at school.

•This school understands the importance of medication being taken and care received as detailed in the pupil's IHCP.

Medication will only be administered when it would be detrimental to a child's health or school attendance not to do so.

•This school will make sure that there are sufficient members of staff who have been trained to administer the medication and meet the care needs of an individual child. This school will ensure that there are sufficient numbers of staff trained to cover any absences, staff turnover and other contingencies. This school's governing body has made sure that there is the appropriate level of insurance and liability cover in place.

•This school will not give medication (prescription or non-prescription) to a child under 16 without a parent's written or verbal consent except in exceptional circumstances.

•When administering medication, for example pain relief, this school will check the maximum dosage and when the previous dose was given.

•This school will make sure that a trained member of staff is available to accompany a pupil with a medical condition on an off-site visit, including overnight stays.

•Parents/carers at this school understand that they should let the school know immediately if their child's needs change.

•If a pupil misuses their medication, or anyone else's, their parent/carer is informed as soon as possible and the school's disciplinary procedures are followed.

This school has clear guidance on the storage of medication and equipment at school.

- This school makes sure that all staff understand what constitutes an emergency for an individual child and makes sure that emergency medication/equipment, e.g. asthma inhalers, epi-pens etc. are readily available wherever the child is in the school and on off-site activities, and are not locked away.
- Pupils may carry their own medication/equipment, or they should know exactly where to access it. Those pupils deemed component to carry their own medication/equipment with them will be identified and recorded through the pupil's IHCP in agreement with parents/carers.
- This school will store controlled drugs securely in a non-portable container, with only named staff having access. Staff at this school can administer a controlled drug to a pupil once they have had specialist training.
- This school will make sure that all medication is stored safely, and that pupils with medical conditions know where they are at all times and have access to them immediately.
- This school will only accept medication that is in date, labelled and in its original container including prescribing instructions for administration. The exception to this is insulin, which though must still be in date, will generally be supplied in an insulin injector pen or a pump.
- Parents/carers are asked to collect all medications/equipment when they expire, and to provide new and in-date medication when required.
- This school disposes of needles and other sharps in line with local policies. Sharps boxes are kept securely at school and will accompany a child on off-site visits. They are collected and disposed of in line with local authority procedures.

This school has clear guidance about record keeping.

- As part of the school's admissions process and annual data collection exercise parents/carers are asked if their child has any medical conditions. These procedures also cover transitional arrangements between schools.
- This school uses an IHCP to record the support an individual pupil needs around their medical condition. The IHCP is developed with the pupil (where appropriate), parent/carer, designated named member of school staff, specialist nurse (where appropriate) and relevant healthcare services.
- This school has a centralised register of IHCPs, and an identified member of staff has the responsibility for this register.
- IHCPs are regularly reviewed, at least every year or whenever the pupil's needs change.
- The pupil (where appropriate) parents/carers, specialist nurse (where appropriate) and relevant healthcare services hold a copy of the IHCP. Other school staff are made aware of and have access to the IHCP for the pupils in their care.
- This school makes sure that the pupil's confidentiality is protected.
- This school seeks permission from parents/carers before sharing any medical information with any other party.
- This school keeps an accurate record of all medication administered, including the dose, time, date and supervising staff.

This school ensures that the whole school environment is inclusive and favourable to pupils with medical conditions. This includes the physical environment, as well as social, sporting and educational activities.

- This school is committed to providing a physical environment accessible to pupils with medical conditions and pupils are consulted to ensure this accessibility. This school is also committed to an accessible physical environment for out-of-school activities.
- This school makes sure the needs of pupils with medical conditions are adequately considered to ensure their involvement in structured and unstructured activities, extended school activities and residential visits.
- All staff are aware of the potential social problems that pupils with medical conditions may experience and use this knowledge, alongside the school's anti bullying policy, to help prevent and deal with any problems. They use opportunities such as PSHE and science lessons to raise awareness of medical conditions to help promote a positive environment.
- This school understands the importance of all pupils taking part in off site visits and physical activity and that all relevant staff make reasonable and appropriate adjustments to such activities in order they are accessible to all pupils. This includes out-of-school clubs and team sports. Risk assessments will be conducted as part of the planning process to take account of any additional controls required for individual pupil needs.
- This school understands that all relevant staff are aware that pupils should not be forced to take part in activities if they are unwell. They should also be aware of pupils who have been advised to avoid/take special precautions during activity, and the potential triggers for a pupil's medical condition when exercising and how to minimise these.

This school makes sure that pupils have the appropriate medication/equipment/food with them during physical activity and offsite visits.

- This school makes sure that pupils with medical conditions can participate fully in all aspects of the curriculum and enjoy the same opportunities at school as any other child, and that appropriate adjustments and extra support are provided.
- All school staff understand that frequent absences, or symptoms, such as limited concentration and frequent tiredness, may be due to a pupil's medical condition.
- This school will not penalise pupils for their attendance if their absences relate to their medical condition.
- This school will refer pupils with medical conditions who are finding it difficult to keep up educationally to the SENCO/INCO who will liaise with the pupil (where appropriate), parent/carer and the pupil's healthcare professional.
- This school makes sure that a risk assessment is carried out before any out-of-school visit. The needs of pupils with medical conditions are considered during this process and plans are put in place for any additional medication, equipment or support that may be required.

This school is aware of the common triggers that can make common medical conditions worse or can bring on an emergency. The school is actively working towards reducing or eliminating these health and safety risks and has a written schedule of reducing specific triggers to support this.

- This school is committed to identifying and reducing triggers both at school and on out-of-school visits.
- School staff have been given training and written information on medical conditions which includes avoiding/reducing exposure to common triggers.
- The IHCP details an individual pupil's triggers and details how to make sure the pupil remains safe throughout the whole school day and on out-of-school activities. Risk assessments are carried out

on all out-of-school activities, taking into account the needs of pupils with medical needs.

- This school reviews all medical emergencies and incidents to see how they could have been avoided, and changes school policy according to these reviews.

Each member of the school and health community knows their roles and responsibilities in maintaining and implementing an effective medical conditions policy.

- This school works in partnership with all relevant parties including the pupil (where appropriate), parent/carer, school's governing body, all school staff, employers and healthcare professionals to ensure that the policy is planned, implemented and maintained successfully.

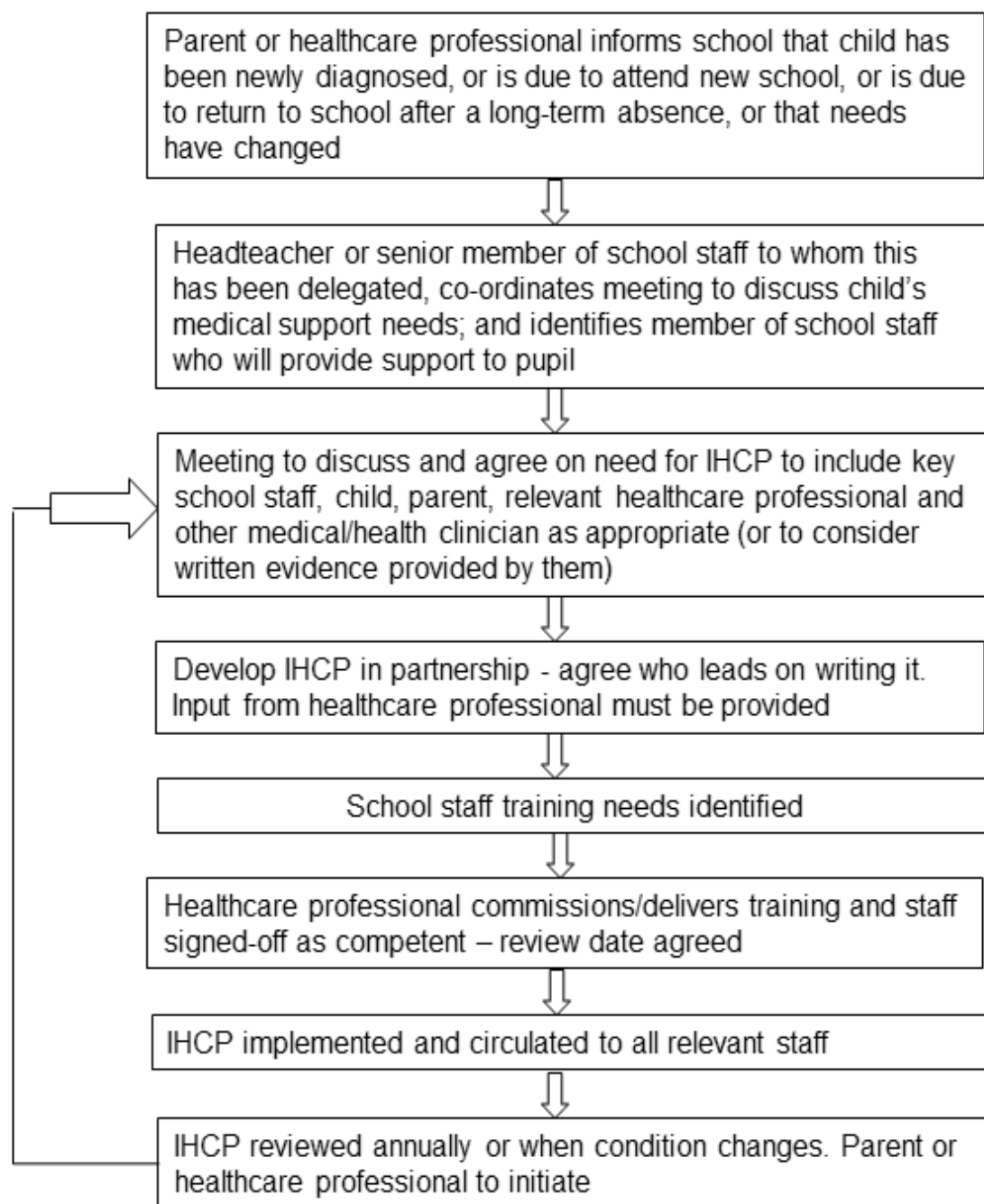
The medical conditions policy is regularly reviewed, evaluated and updated. Updates are produced every year.

- In evaluating the policy, this school seeks feedback from key stakeholders including (pupils, parents/carers where applicable), school nurses, specialist nurses and other relevant healthcare professionals, school staff, local emergency care services and governors. The views of pupils with medical conditions are central to the evaluation process.

Should parents and pupils be dissatisfied with the support provided they should discuss these concerns to the Headteacher.

Appendix 1

Model process for developing individual healthcare plans



Signed:

Chair of Governors

Dated:

Signed:

Head Teacher

Dated:

